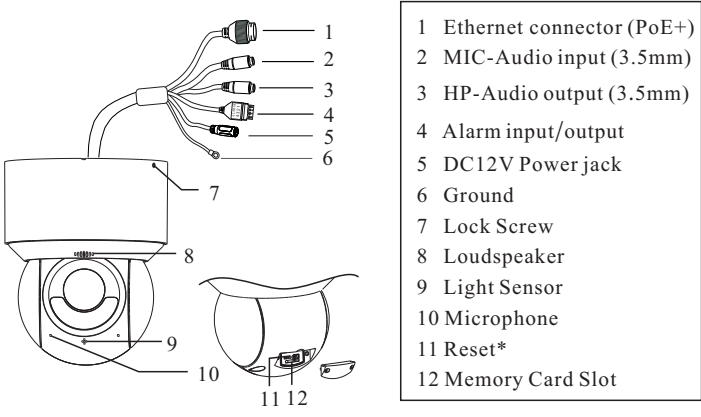


# HD PTZ Camera

## Quick Start Guide

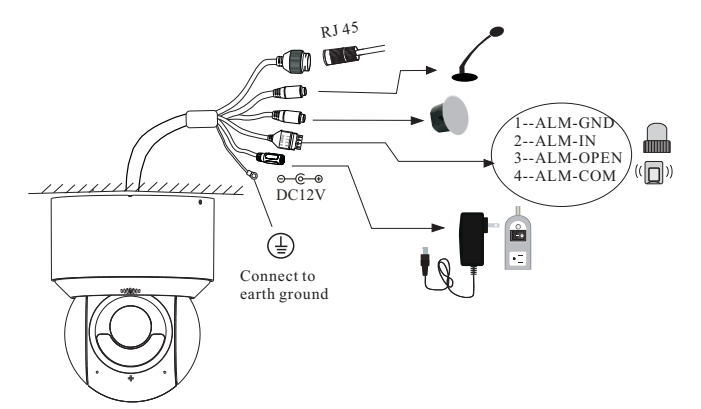
- Please read this instruction carefully before using the product and keep it for further reference.
- All the examples and pictures used here are for reference only.
- The contents of this manual are subject to change without notice.

### 1 Overview

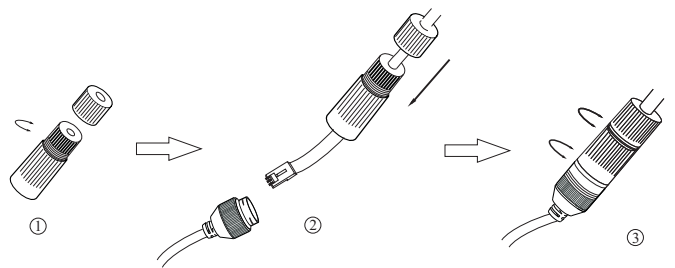


\*Reset: After the camera is powered on, press and hold the reset button for more than 5s to reset to the factory default settings.

### 2 Cable Connection

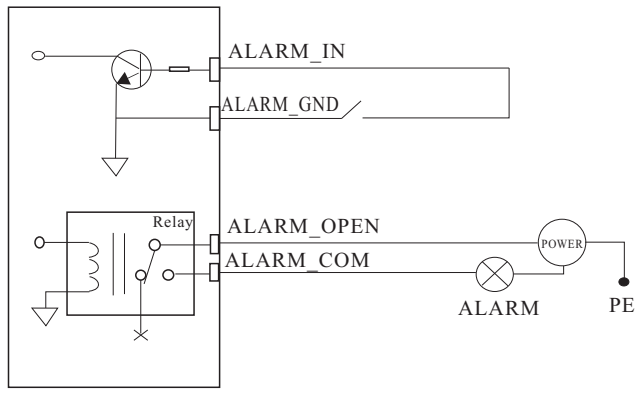


### ▶ Connecting Network Cable



- ① Loosen the nut from the main element.
- ② Run the network cable (without RJ 45 connector) through the both elements. Then crimp the cable with RJ 45 connector.
- ③ Connect the cable to the Ethernet connector. Then tighten the nut and the main cover.

### Connecting Alarm Input/Output



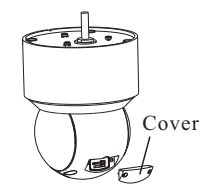
The max. load of alarm output: 30VDC, 1A

### 3 Installation

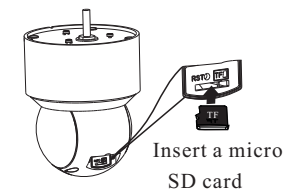
Please make sure the wall is strong enough to bear the dome camera's weight and the camera is powered off during installation.

This PTZ camera supports different ways of installation. Please select a way to install as needed. The following instructions are for reference only.

### ● Memory Card Installation



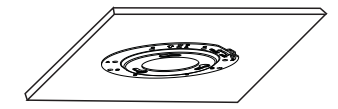
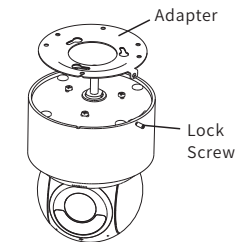
1. Loosen the two screws of the cover and then remove the cover.



2. Insert a micro SD card as indicated above and then install the cover back.

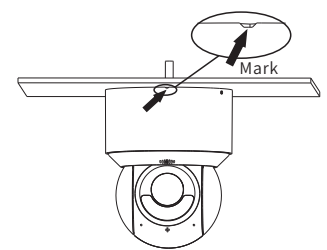
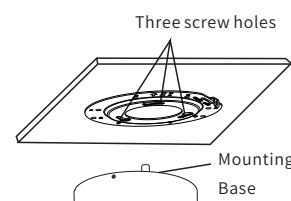
### ● Ceiling Mounting

1. Unscrew the lock screw and then remove the adapter.

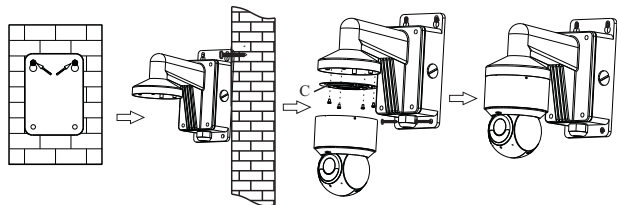
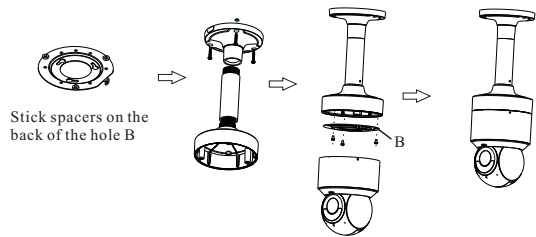
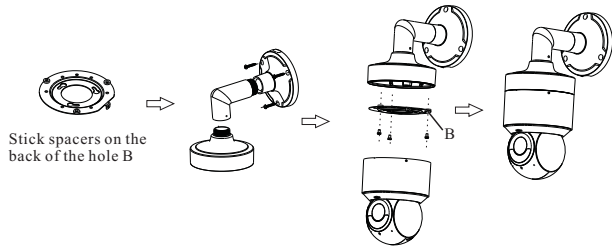
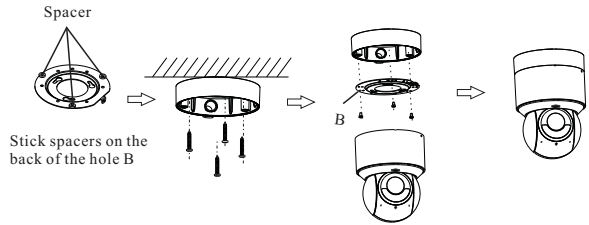
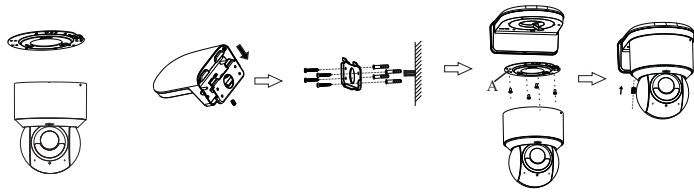


3. Align the three screw holes of the adapter with the screws of the mounting base and then put these screws into these screw holes. After that, turn the mounting base clockwise to secure the PTZ camera.

4. Adjust the PTZ camera position and then tighten the lock screw on the side. Note that the marked position should be the front of the camera.



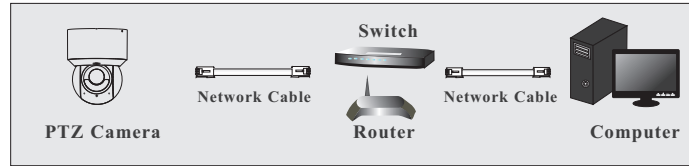
● Camera Mounting with a Junction Box/Bracket



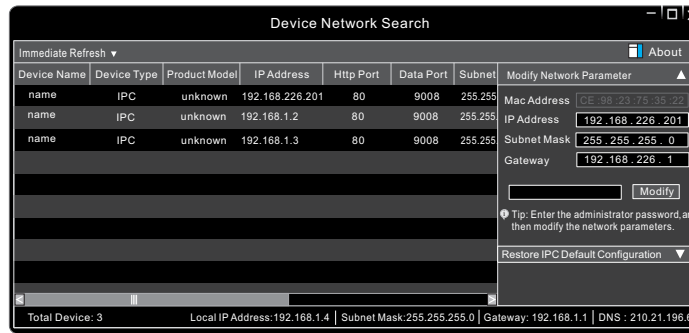
## 4 Network Connection

Here we take accessing IP camera via LAN for example.

● Access the camera through IP-Tool



- ① Make sure that the camera and the PC are connected via LAN.
  - ② Find the IP-Tool from the CD and then install it in the computer.
- After that, run the IP-Tool as shown below.



- ③ Double click the camera information listed in the IP-Tool to open the web browser. Or manually enter the default IP address in the address bar of your browser.

The default IP address of this camera is **192.168.226.201**.

Then follow directions to download and install the plugin if prompted.

- ④ Activate and log in the camera. The default username is **admin**; the default password is **123456** or you need to self-define the password. Please operate according to the actual situation.

## 5 Preset Description

Call Preset	Call No. 90 Preset	Run trace 1
	Call No. 91 Preset	Run cruise 1
	Call No. 92 Preset	Run cruise 2
	Call No. 93 Preset	Run cruise 3
	Call No. 94 Preset	Run cruise 4
	Call No. 97 Preset	Enable random scan
Save Preset	Save No. 91 Preset	Save the random scan start point
	Save No. 92 Preset	Save the left scan endpoint
	Save No. 93 Preset	Save the right scan endpoint